



Carl Zeiss AG

Consumer Products
73446 Oberkochen
Germany

Firmware Update Manual

Zeiss CP.3 and Supreme Prime Lenses

Manual Version 1
Issued Nov 2018

Table of Contents

Introduction	3
Explanation of Symbols	3
Equipment needed	4
Setting the Lens to the download mode	5
Preparing the Connection Kit	6
Setup of the computer	6
Loading the most recent software on the computer	7
Update the lens firmware	8
Setting the lens to the cooke \i mode	12
Troubleshooting	12
Appendix	13

Introduction

This document describes how to update firmware on the Zeiss CP.3 XD and Supreme Prime lenses. If your CP.3 XD lens or Supreme Prime lens has an older firmware revision than the most recent one, it is recommended to install this new firmware.

Most recent firmware can be downloaded from the Zeiss homepage www.zeiss.com/camera-lenses/int/service/download-center.html. The necessary installation file and a brief description of the new firmware features are stored in a .zip file.

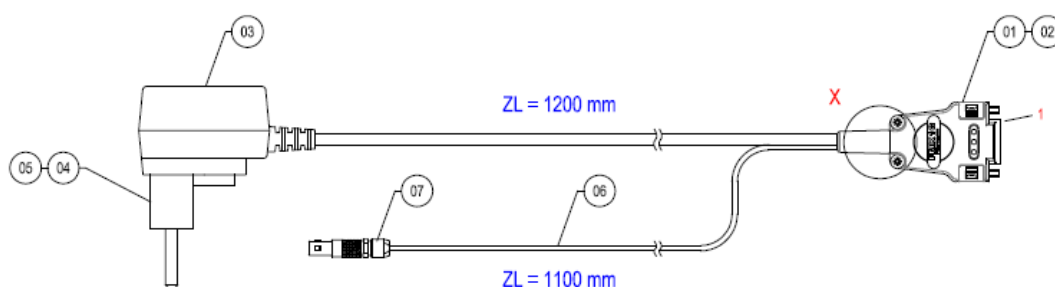
For the firmware update a special connection kit is needed consisting of the lens connector, a DC power supply, the RS232 plug and a USB /RS232 converter. This kit is available at the Carl Zeiss Service stations and can be ordered from the Zeiss Customer Care Center.

Explanation of Symbols

INFO	The information symbol indicates additional information, which is useful for the context.
RESULT	The result symbol indicates information about the obtained result of a step.

Equipment needed

- Computer
 - Installed OS: Windows
 - At least 1 free USB port
- Connection Kit eXtended Data available at ZEISS, see below drawing. The kit consists of:
 - Digitus® USB – RS232 Converter including driver CD
 - Cable with 9 pin D-Sub female plug and 4pin male plug for lens XD connector
 - International power plug adapter
The adapter can operate with AC power from 100VAC to 240VAC, adapters for US or Euro AC main sockets are enclosed in the cable set.



INFO

The drivers for the Digitus® USB – RS232 converter must be installed on the computer. For additional information see troubleshooting section.

Setting the lens to the download mode

Unscrew the plug housing of the external XD connector, using a T4 type screw driver.



INFO

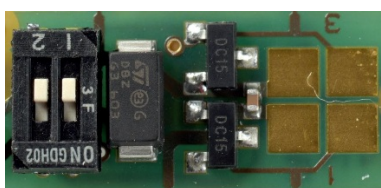
*Take care on the washers below the four screws!
Don't forget to assemble.*

After removing the XD plug housing the two mode switches are accessible.



Mode switches

Set both mode switches to the OFF position. This is the mode for firmware download.

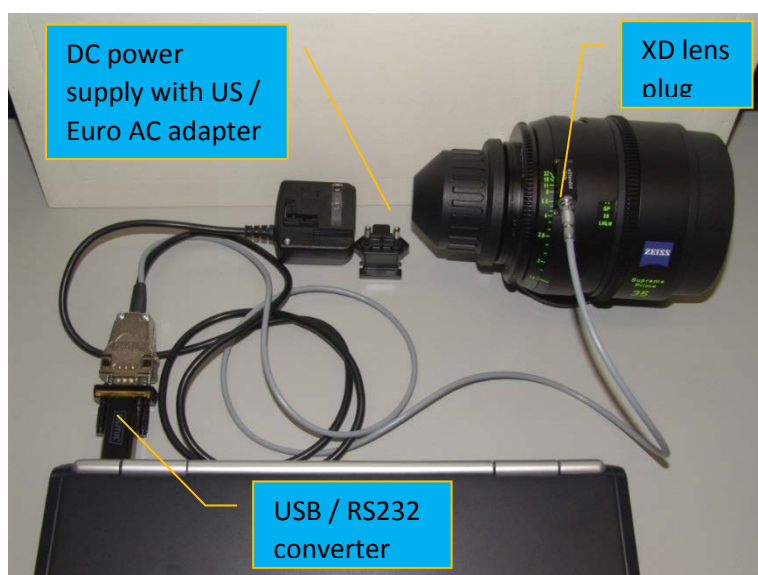


Assemble the housing for the external XD plug with four screws, including the washers.



Preparing the Connection Kit

- Attach the US or Euro power adapter to the power supply.
- Plug the power supply into an AC main power socket.
- Connect the USB / RS232 converter to a free USB port of the computer.
- Connect the 9 pin D-Sub female plug to the USB / RS232 converter.
- Finally connect the XD plug to the lens.



Setup of the computer

Start your computer.

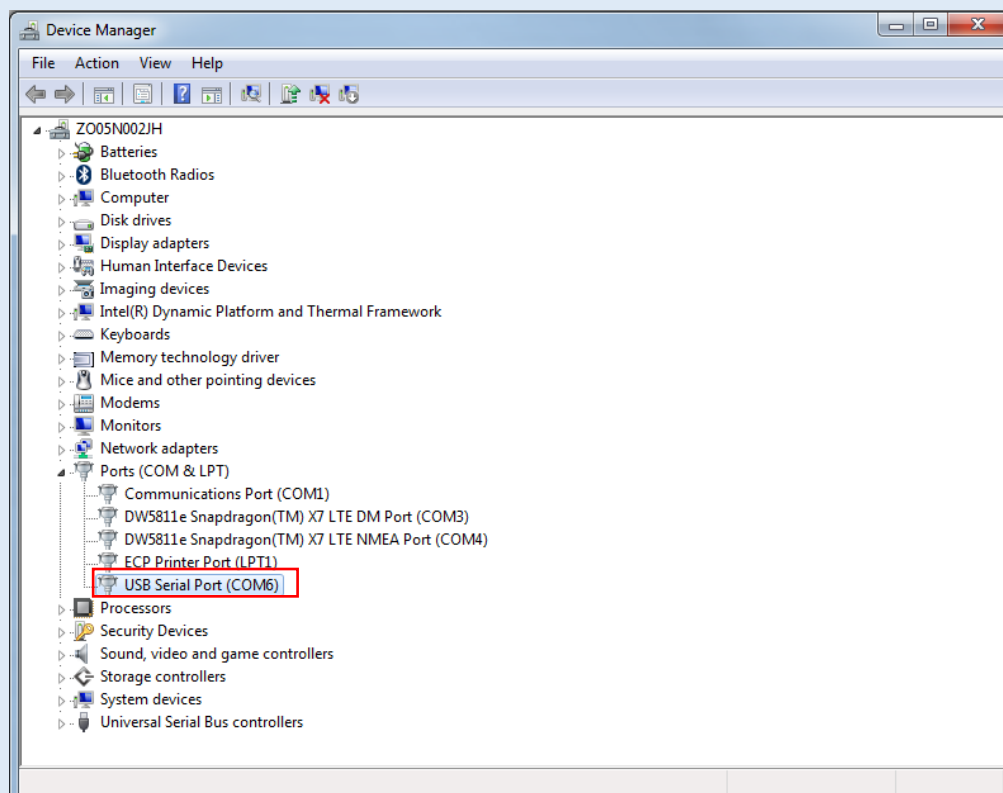
INFO

A window should pop up reading that drivers have been installed and your device is ready to use.

Identify the COM port (COM#) the computer is using for the Connection Kit.

INFO

You'll find the COM port in the **Device Manager** under **Ports (COM & LPT)>USB Serial Port**. To get to the Device Manager, press the **WINDOWS** key and type in "Device Manager".



In this example the identified COM port would be **COM6**.

Loading the most recent software on the computer

New firmware can be downloaded from the Zeiss homepage. The necessary installation file, a brief description of the new firmware features and the manual are stored in a .zip file.

Download the most recent firmware and un – zip it.

INFO

You can find the download section here:

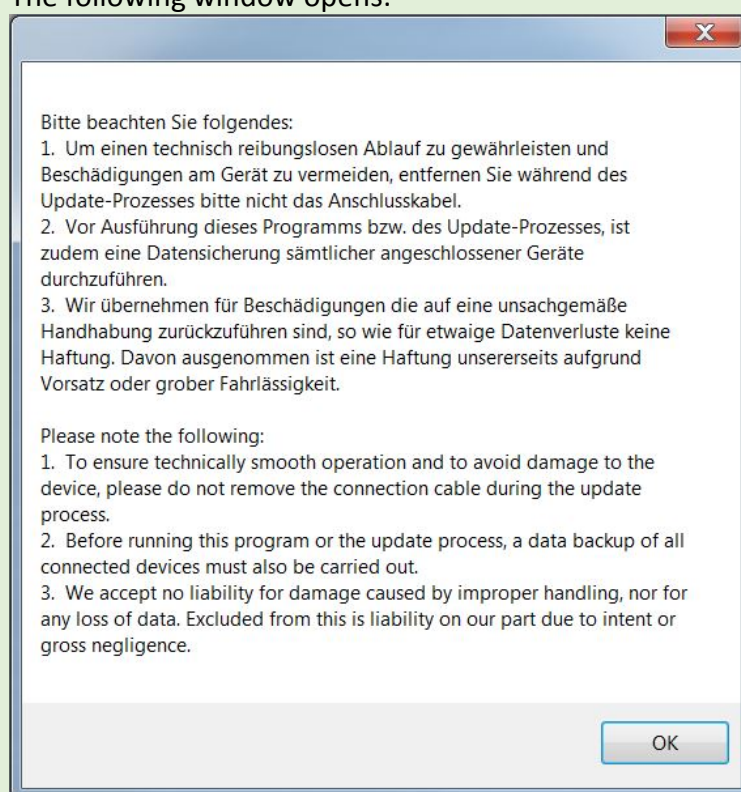
www.zeiss.com/camera-lenses/int/service/download-center.html.

Update the lens firmware

Start the installer program "LensUpdate_1_nn.exe".

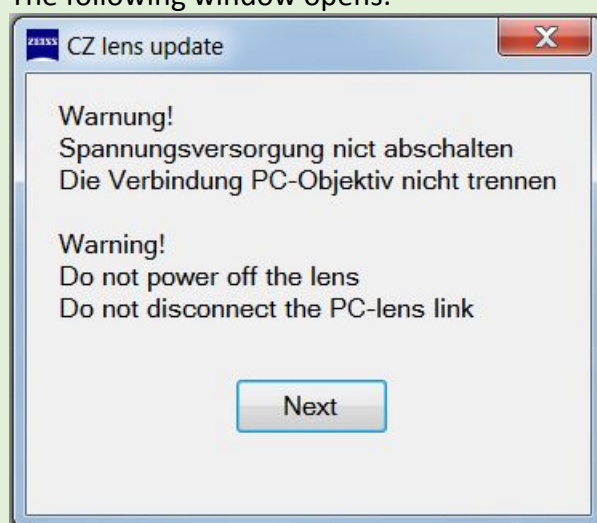
The software displays a disclaimer and warning messages. Please read these info's carefully.

RESULT The following window opens:



Next a warning message is displayed not to interrupt power supply or cable connection during the update.

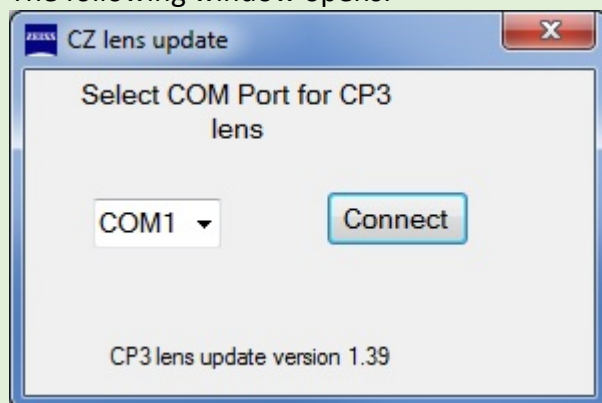
RESULT The following window opens:



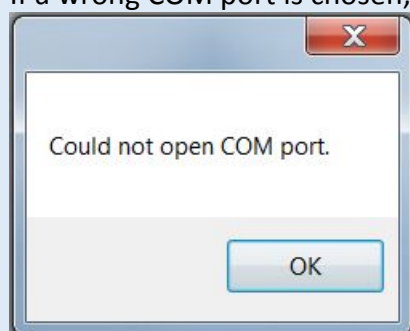
Firmware Update CP.3 / Supreme Prime Lenses

Select the USB serial port as identified in the previous paragraph and click on the „Connect“ button to enable the communication between PC and lens.

RESULT The following window opens:



INFO If a wrong COM port is chosen, the following window opens:



Firmware Update CP.3 / Supreme Prime Lenses

Now the software checks and display basic lens informations and the actual firmware stored on the lens.

If the stored firmware version on the lens is older than the new firmware, the newer version can be updated by clicking on the Update button.

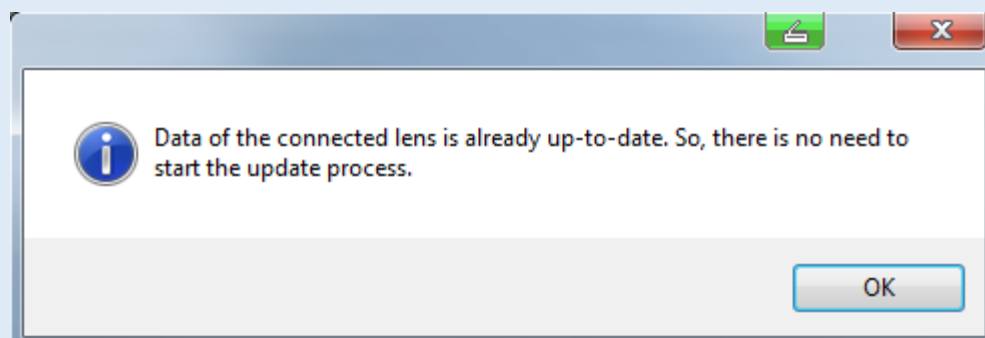
RESULT

The following window opens:



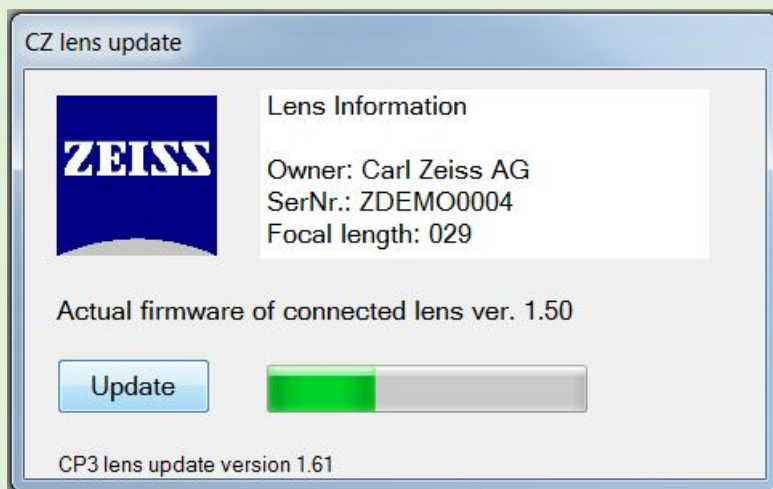
INFO

If your lens is already up-to-date, the following window will open instead. No further action is needed.



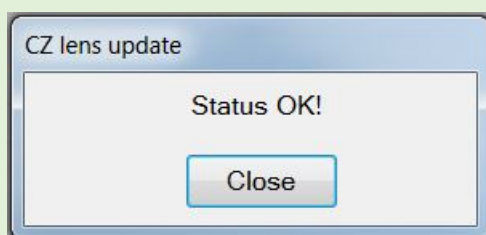
While the lens update runs a green vertical bar indicate the progress.

RESULT



When the new firmware is transmitted on the lens successfully the installer program confirms with the following status message.

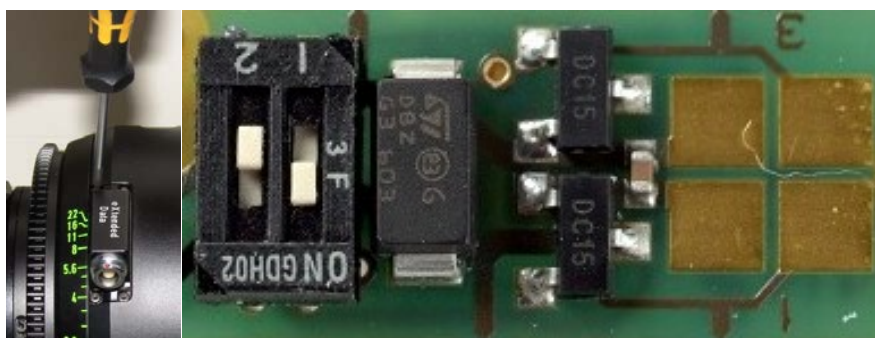
RESULT



Finally plug out the XD cable from the lens.

Setting the lens to the Cooke /i mode*

Dis -assemble the housing for the external XD plug and set the mode switches back to the Cooke /i* mode.



Finally assemble the XD plug housing.

Troubleshooting

I can't find USB Serial Port under the Ports (COM & LPT) tab in the Device Manager.	Reason: Drivers are not installed properly.
	Install the drivers from the enclosed CD.
	<div> INFO If you can't find the CD, you can download the drivers from the manufacturers website. </div> <div> RESULT The USB Serial Port is now listed under Ports (COM & LPT) in the Device Manager. </div>

* /i is a registered trademark of Cooke Optics Limited used with permission.



Appendix

Accessories	ZEISS Identification Number
Connection Kit eXtended Data	2217-107

Document subject to change!

Carl Zeiss AG
Camera Lenses
73446 Oberkochen
Germany
www.zeiss.com/cine